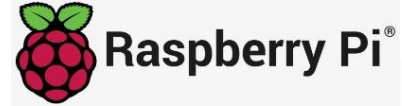
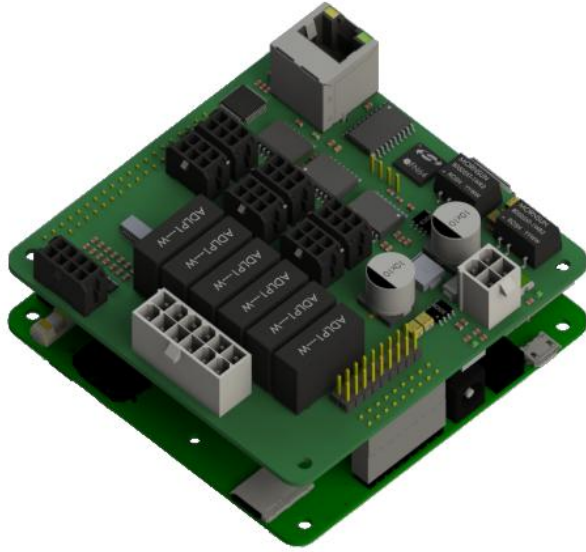


Raspberry Pi 3 & Compute Module SBC



Industrial Computer

Raspberry Pi 3 & Compute Module Multi Communication Industrial Computer

Overview

Ethercat is the fastest industrial communication protocol, nearly realtime (less than 100 μ s. Cycle time).

These are e.g. aviation, robotic, telecommunications, automation, controllers, power engineering and radio data modems - where no display connection is required. Due to its small size of approximately 9 x 9 cm and the large number of interfaces and functions, it's a compact solution for many applications.

PRODUCT FEATURES

Architecture

- Raspberry Pi 3 & Compute Module
- Cortex-A53 (ARMv8)
64-bit SoC @ 1.4GHz
- 64GB MMC
- 1x Ethernet 10/100/1000 Mbit
- 1x Ethercat 10/100 Mbit (PRU)
- 1x 1GB LPDDR2 SDRAM
- 1x CAN-BUS
- 4x RS485
- 1x RS232
- 2x USB 2.0

Environmental

- Operating Temperature: -25 to 70°C

Power Input

- 13-60 Vdc

Disclaimer: All images are for reference purposes only

Revised | May 07 2020 (V2)

Important Notice: Information contained in this data sheet is believed to be reliable at the date of issue, however accuracy and completeness is not guaranteed. Satelcom holds the right to change the product specifications without notice.



SATELCOM TELEKOMÜNİKASYON
BİLGİ VE İLETİŞİM TEKNOLOJİLERİ İTHALAT VE İHRACAT SANAYİ A.Ş.
BÜDOTEK Teknopark, Dudullu OSB Mah. Des 2.Cad. No:8/25 Zemin Kat 34776
Ümraniye/İSTANBUL
+90 (216) 540 30 20
info@satelcom.com.tr www.satelcom.com.tr

Processor System

Feature	Details
Processor	Cortex-A53 (ARMv8) 64-bit SoC @ 1.4GHz
Storage	64GB MMC
RAM	1GB LPDDR2 SDRAM

Communications

Specification	Details
LAN	1 x Ethernet
EtherCAT Field Bus	1 x EtherCat
CAN for Device Network	1 x CAN-BUS (isolated)
USB OTG	2 x USB 2.0
RS485	4 x RS485 (isolated)
RS232	1 x RS232 (isolated)
Digital I/O	7 x Digital input
Relay Output	6 x Dry contact (relay)
HDMI	1 x HDMI
Mini PCI Port	1 x mini PCI port
RTC	1 x RTC
Wi-Fi Connections	2.4GHz and 5GHz IEEE 802.11.b/g/n/ac wireless LAN, Bluetooth 4.2, BLE

Disclaimer: All images are for reference purposes only

Revised | May 07 2020 (V2)

Important Notice: Information contained in this data sheet is believed to be reliable at the date of issue, however accuracy and completeness is not guaranteed. Satelcom holds the right to change the product specifications without notice.



Power Supply

Feature	Details
Supply Input Voltage	13-60 Vdc
Typical Power Consumption	20 W
Output Voltage	+12Vdc +5Vdc

Physical Specifications

Feature	Details
Weight	IP20 > 200 gr
Dimensions	90 mm x 90 mm x 44 mm
Protection Level	IP20

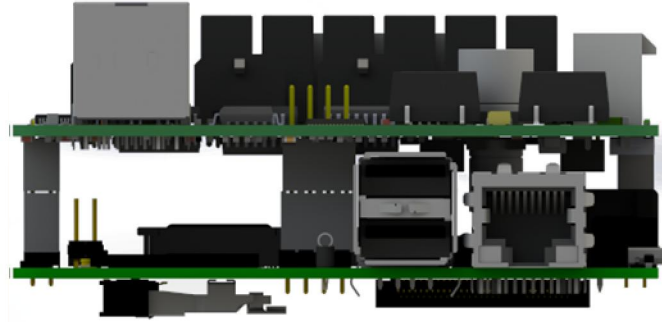
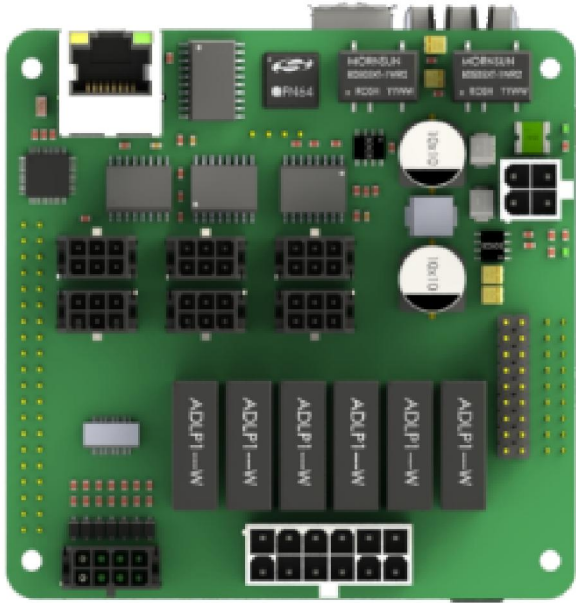
Disclaimer: All images are for reference purposes only

Revised | May 07 2020 (V2)

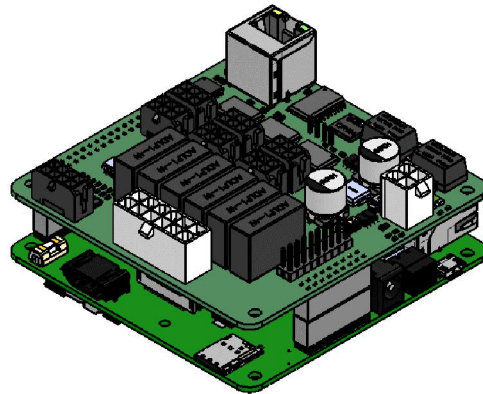
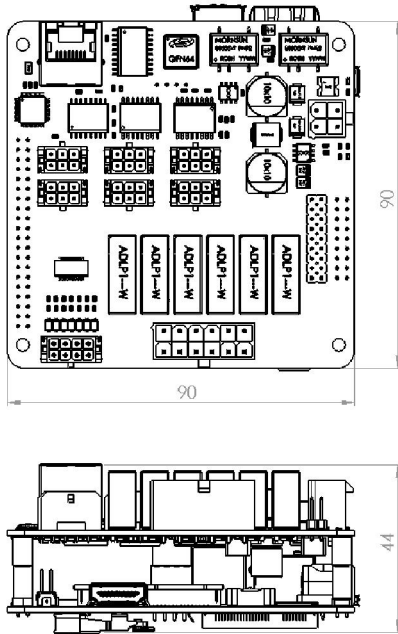
Important Notice: Information contained in this data sheet is believed to be reliable at the date of issue, however accuracy and completeness is not guaranteed. Satelcom holds the right to change the product specifications without notice.



Interfaces



Dimensions



Disclaimer: All images are for reference purposes only

Revised | May 07 2020 (V2)

Important Notice: Information contained in this data sheet is believed to be reliable at the date of issue, however accuracy and completeness is not guaranteed. Satelcom holds the right to change the product specifications without notice.



SATELCOM TELEKOMÜNİKASYON
BİLGİ VE İLETİŞİM TEKNOLOJİLERİ İTHALAT VE İHRACAT SANAYİ A.Ş.
BÜDOTEK Teknopark, Dudullu OSB Mah. Des 2.Cad. No:8/25 Zemin Kat 34776
Ümraniye/İSTANBUL
+90 (216) 540 30 20
info@satelcom.com.tr www.satelcom.com.tr